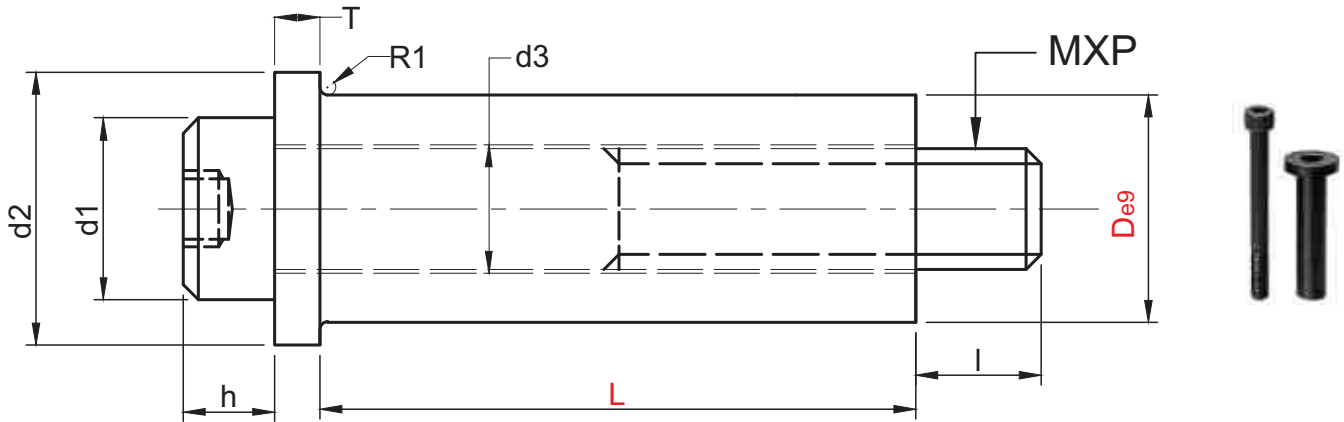


► Spool Retainer (PSRS)



Material :- En-8
Hardness :- 38-42HRC
Surface Treatment :- Blackodised

De9		d1	d2	d3	MxP	h	T	l
10	(-0.025) (-0.061)	10	15	6.3	6x1.0	6	5	10
13	(-0.032) (-0.075)	13	18	8.4	8x1.25	8	5	15
16		16	24	10.6	10x1.5	10	8	22
20	(-0.040) (-0.092)	18	28	12.6	12x1.75	12	10	20
25		24	36	16.8	16x2.0	16	13	27
32	(-0.050) (-0.112)	30	45	20.8	20x2.5	20	16	34

Type	D	L
PSRS	10	10, 15, 20, 25, 30, 35, 40, 45, 50, 55, 60, 65, 70, 75, 80, 85, 90, 100
	13	15, 20, 25, 30, 35, 40, 45, 50, 55, 60, 65, 70, 75, 80, 85, 90, 100, 110, 120
	16	20, 25, 30, 35, 40, 45, 50, 55, 60, 65, 70, 75, 80, 85, 90, 100, 110, 120, 130, 140, 150, 160, 170, 180
	20	30, 35, 40, 45, 50, 55, 60, 65, 70, 75, 80, 85, 90, 100, 110, 120, 130, 140, 150, 160, 170, 180
	25	40, 45, 50, 55, 60, 65, 70, 75, 80, 85, 90, 100, 110, 120, 130, 140, 150, 160, 170, 180, 200
	32	60, 70, 80, 90, 100, 110, 120, 130, 140, 150, 160, 170, 180, 200

Order Type :- Code X D X L
Example :- PSRS X 16 X 50